



Integrate ◊ Collaborate ◊ Experience



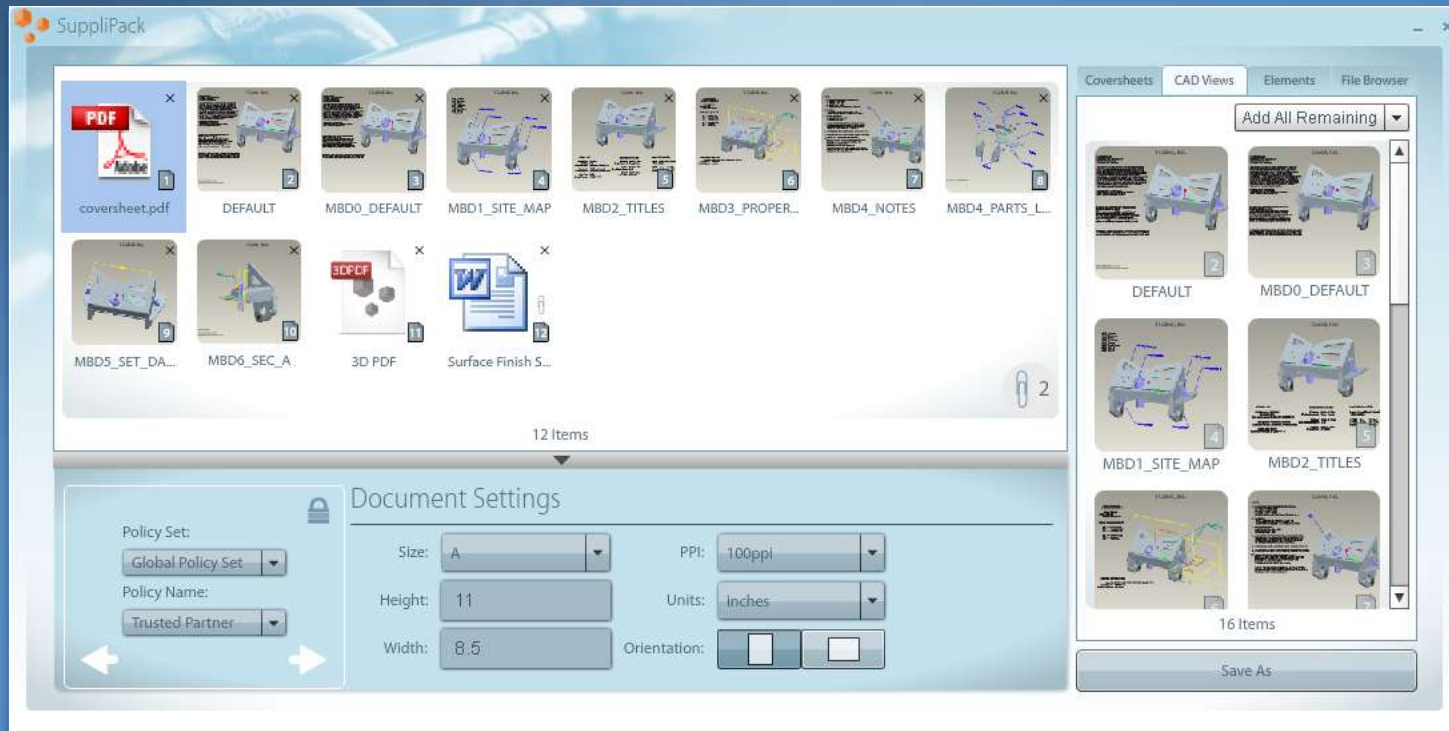
**i-Cubed** Bridging the Enterprise

## SuppliPack

Combine, control and secure technical data packages within the context of the Pro/ENGINEER session

## Productivity

Assemble Technical Data Packages in minutes instead of hours



## Security

Digital Rights Management prevents Intellectual Property leakage

## Collaboration

Create 3DPDF Viewables that can be used downstream by any user that has Adobe Acrobat Reader



# SuppliPack

1. Authoring tool to create 3D Technical Data Packages (3D TDPs)
2. Lightweight Adobe-Flex based application running in the context of the CAD session
3. Convert CAD Views into PDF for Supply Chain Interoperability
4. Enables Model-Based Enterprise (MBE) Initiatives
  - Create – Direct annotation of the 3D Model in Pro/E
  - *Author – Package 3D views, supporting documents, and derivative equivalents*
  - *Publish – Dynamically secure 3D design assets*
  - Consume – Ubiquitous output format: Acrobat PDF



# SuppliPack Benefits for OSD

## Increase Productivity

- Create MBD CAD Views in 5-10 minutes; reduction from 1-2 hrs
- Generate 3D PDF Models within context of the CAD session
- Synchronize 3D Models with TDPs by programmatically associating with WTParts

## Improve Collaboration

- Produce PDF-based Technical Data Packages (TDPs) managed by Windchill
- Attach validated 3D Derivatives (Native CAD, STEP, IGES, ProductView) within the PDF
- Reduce rework by maintaining downstream version compliance with Adobe LiveCycle RM

## Enhance Security

- Protect Technical Data Packages with Adobe LiveCycle Rights Management
- Apply regulatory compliance Cover Sheets to the TDP
- Enhance PLM investment by integrating metadata into the TDP

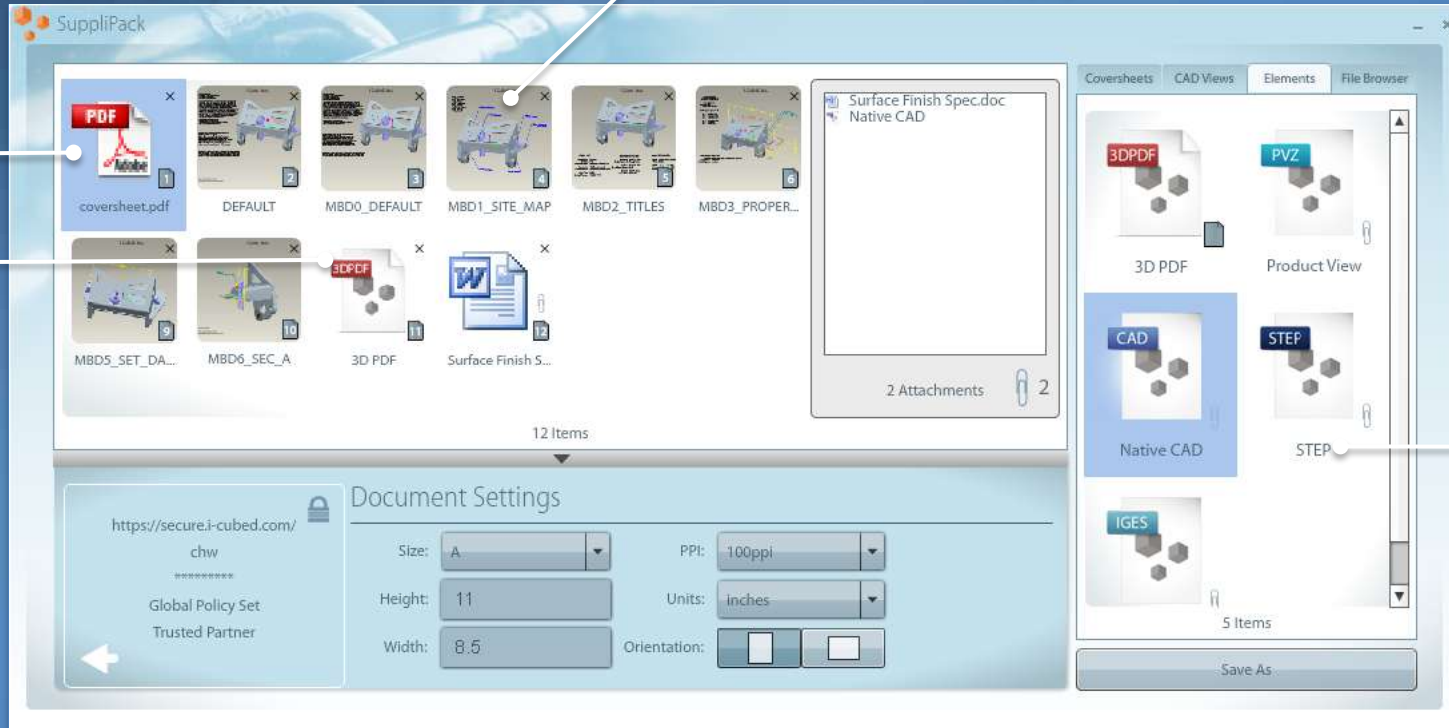


### TDP Creation

Use Drop & Drag to create the document story for the targeted audience or follow presets for standard TDP options

### Model Based Definition

Create 3D Models and 3D Annotations and SuppliPack will automatically generate PDFs of the Combined State Views



### 3D PDF Support

Convey design intent with 3D PDF and support MDB initiatives by conveying 3D Annotations & Product Manufacturing Information (PMI)

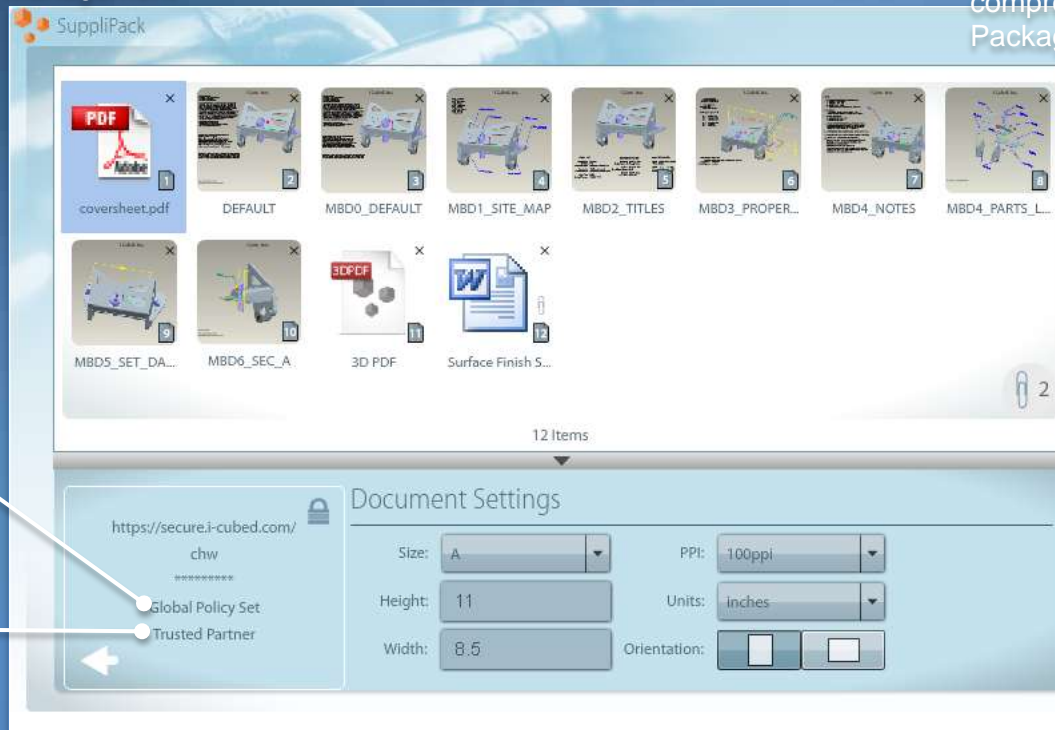
### Derivative Equivalents

Programmatically generate and attach 3D Model equivalents such as Native CAD, STEP, IGES, and ProductView



## Rights Management

Protect files based on policies that map business objectives to security requirements with LiveCycle Rights Management

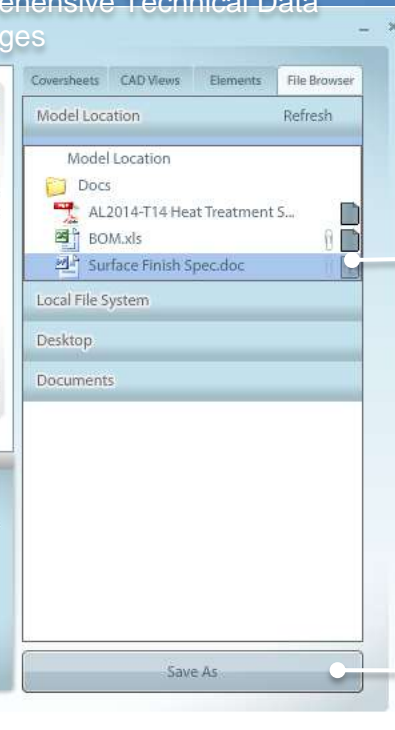


## Version Compliance

Select policy sets to enforce version control and set traceability options on users that have access to the TDP

## Detailed Documentation

Accompany CAD Models with supporting documentation to create comprehensive Technical Data Packages



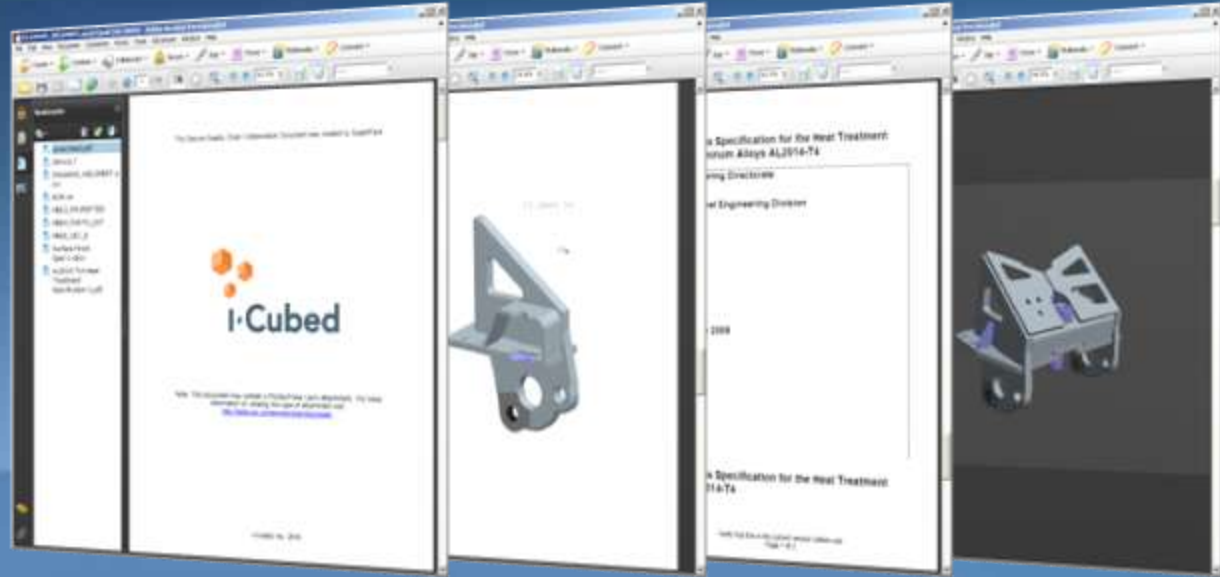
## Publishing Options

Directly publish to the Context of the Model and associate PDF to the WTPart



## TDP Assembly

Assemble CAD documentation into a single bookmarked PDF including customized coversheets for regulatory compliance



## PDF Attachments

Support multiple file types  
Native CAD, STEP, IGES, & Product View



# SuppliPack™

## Solution Components

### PTC Pro/ENGINEER Wildfire 4.x/5.x

Integrated, parametric, 3D CAD/CAM/CAE solutions allow you to design faster than ever, while maximizing innovation and quality to ultimately create exceptional products.



### PTC Windchill PDMLink 9.0/9.1 (Optional)

PLM software for managing product content and processes. Fast, secure, and Web-based, software that enables companies to streamline product development.

 **SuppliPack**  
Enables Secure Supply  
Chain Collaboration

### 3D PDF Converter Premium includes Adobe

**Acrobat X**  
Convert a wide range of native and standard file formats to PDF Portfolios. Client-side generation of PDFs including 3DPDF.



### Adobe LiveCycle Rights Management (Optional)

Reduce risk with persistent document-centric security. Protect files based on policies that map business objectives to security requirements.





# SuppliPack™ Supported Systems

## PTC Pro/ENGINEER Wildfire 4.x/5.x

Window XP 32-bit, 64-bit  
Windows 7 32-bit, 64-bit



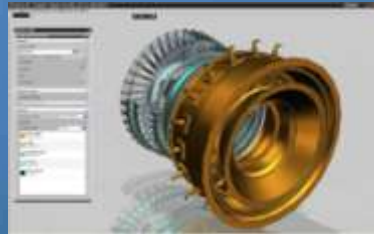
## Dassault SolidWorks 2009 *April Release*

Window XP 32-bit, 64-bit  
Windows 7 32-bit, 64-bit

 **SuppliPack**  
Enables Secure Supply  
Chain Collaboration

## Siemens NX 6 *June Release*

Window XP 32-bit, 64-bit  
Windows 7 32-bit, 64-bit



## Dassault CATIA R19, R20 *June Release*

Window XP 32-bit, 64-bit  
Windows 7 32-bit, 64-bit

